



First Look: Connecting Systems Using Interoperability Productions

Version 2018.1
2018-10-22

First Look: Connecting Systems Using Interoperability Productions

InterSystems IRIS Data Platform Version 2018.1 2018-10-22

Copyright © 2018 InterSystems Corporation

All rights reserved.



InterSystems, InterSystems Caché, InterSystems Ensemble, InterSystems HealthShare, HealthShare, InterSystems TrakCare, TrakCare, InterSystems DeepSee, and DeepSee are registered trademarks of InterSystems Corporation.



InterSystems IRIS Data Platform, InterSystems IRIS, InterSystems iKnow, Zen, and Caché Server Pages are trademarks of InterSystems Corporation.

All other brand or product names used herein are trademarks or registered trademarks of their respective companies or organizations.

This document contains trade secret and confidential information which is the property of InterSystems Corporation, One Memorial Drive, Cambridge, MA 02142, or its affiliates, and is furnished for the sole purpose of the operation and maintenance of the products of InterSystems Corporation. No part of this publication is to be used for any other purpose, and this publication is not to be reproduced, copied, disclosed, transmitted, stored in a retrieval system or translated into any human or computer language, in any form, by any means, in whole or in part, without the express prior written consent of InterSystems Corporation.

The copying, use and disposition of this document and the software programs described herein is prohibited except to the limited extent set forth in the standard software license agreement(s) of InterSystems Corporation covering such programs and related documentation. InterSystems Corporation makes no representations and warranties concerning such software programs other than those set forth in such standard software license agreement(s). In addition, the liability of InterSystems Corporation for any losses or damages relating to or arising out of the use of such software programs is limited in the manner set forth in such standard software license agreement(s).

THE FOREGOING IS A GENERAL SUMMARY OF THE RESTRICTIONS AND LIMITATIONS IMPOSED BY INTERSYSTEMS CORPORATION ON THE USE OF, AND LIABILITY ARISING FROM, ITS COMPUTER SOFTWARE. FOR COMPLETE INFORMATION REFERENCE SHOULD BE MADE TO THE STANDARD SOFTWARE LICENSE AGREEMENT(S) OF INTERSYSTEMS CORPORATION, COPIES OF WHICH WILL BE MADE AVAILABLE UPON REQUEST.

InterSystems Corporation disclaims responsibility for errors which may appear in this document, and it reserves the right, in its sole discretion and without notice, to make substitutions and modifications in the products and practices described in this document.

For Support questions about any InterSystems products, contact:

InterSystems Worldwide Response Center (WRC)

Tel: +1-617-621-0700

Tel: +44 (0) 844 854 2917

Email: support@InterSystems.com

Table of Contents

First Look: Connecting Systems Using Interoperability Productions.....	1
1 Introducing Integration Productions	1
2 Trying Connecting Systems for Yourself	2
2.1 Creating an Interoperability-Enabled Namespace	2
2.2 Creating a Simple Production with Business Services and Operations	3
2.3 Starting the Production and Tracing Messages	5
2.4 Adding a Router to the Production	6
3 Learn More About Interoperability Productions	7

First Look: Connecting Systems Using Interoperability Productions

This First Look guide helps you connect systems together with InterSystems IRIS Data Platform™ integration productions. Connecting systems involves allowing messages from one system to be processed by another system. For example, the following scenarios require connecting systems:

- To improve efficiency, systems originally designed to perform a single function need to be integrated. For example, you can gain efficiency by integrating individual systems that track inventory, order materials, record sales, and control shipping.
- After a merger, systems that perform the same function in the separate organizations need to work together for the unified organization to be effective.

When connecting systems together, you may be faced with challenges such as:

- Systems use different communication protocols: one system may use TCP, another uses SOAP, and a third uses REST.
- Systems use different messages with different formats or based on different standards.
- You may be required to guarantee that messages are delivered successfully to the right system and be able to detect and correct failures.
- You have to monitor the system transferring the messages, provide a queue for messages if too many come at one time, and monitor overall system performance to ensure that there aren't any roadblocks.

While it is possible to code a custom application to connect systems, it is much easier and faster to develop an InterSystems IRIS™ production. InterSystems IRIS provides a framework that allows you to connect systems and either minimizes or eliminates the need for custom code.

1 Introducing Integration Productions

An InterSystems IRIS production is an integration framework for easily connecting systems and for developing applications for interoperability. A production provides built-in connections to a wide variety of message formats and communications protocols. You can easily add other formats and protocols – and define business logic and message transformations either by coding or using graphic wizards. Productions provide persistent storage of messages, which allow you to trace the path of a message and audit whether a message is successfully delivered. A production consists of business services, processes, and operations:

- Business services connect with external systems and receive messages from them.
- Business processes allow you to define business logic, including routing and message transformation.
- Business operations connect with external systems and send the messages to them.

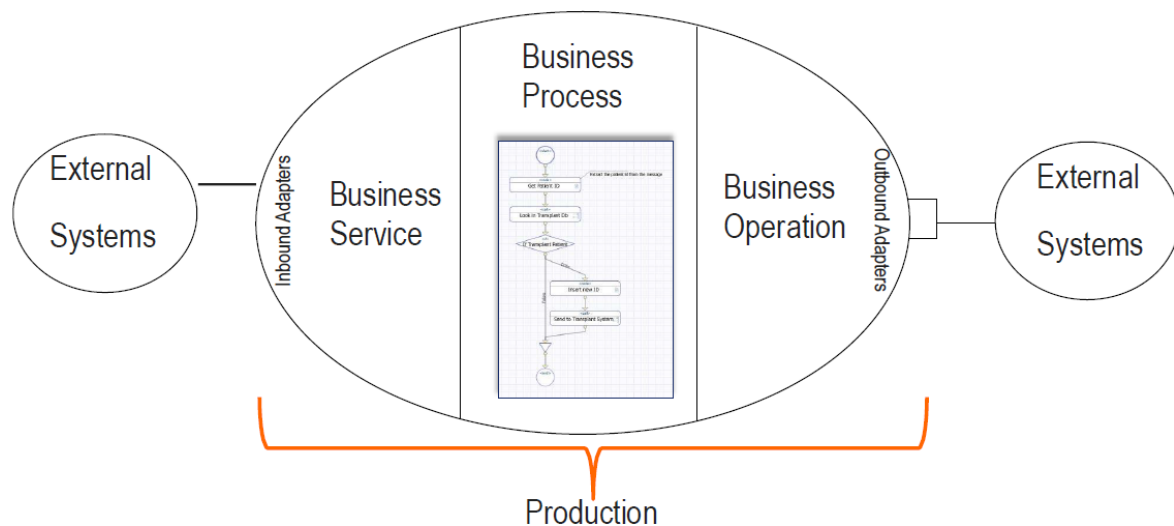
When connecting systems together, it can be challenging to get them to understand the other system's messages and documents. For example, consider the following problem:

- You have two separate systems: one is collecting data from multiple networked devices and the other is a work order system that tracks broken devices and the repair process.

- The current process depends on human intervention to monitor the devices and initiate the repair process. This has caused delays and is unreliable.
- You have been given the task to connect the two systems together: to monitor the data being collected and to automate initiating the repair process. You know how to detect faulty devices in the data collection system and know how to initiate a repair, but the two systems store data in incompatible formats even when the data represents the same item.
- You also need to record the actions when a repair is initiated from the data collection system.

You can solve this problem using an InterSystems IRIS production. It provides the framework for defining an interface that accepts messages from the data collection system, transforming the message into one that can be understood by the repair system, and then sending it to the repair system. It also stores a record of the message path.

The following illustrates a simple production:



For demonstration purposes, the production in this document uses file adapters and represents the external systems as files. Because most of the work dealing with the external system is done by adapters provided with InterSystems IRIS, developing a production connecting to the external systems with REST, TCP, SOAP, or HTTP is very similar to developing a production using file adapters.

2 Trying Connecting Systems for Yourself

In this section, you will create a production using an inbound and outbound file adapter. You will use business services, processes, and operations built in to InterSystems IRIS, so you won't have to download any code. For instructions on how to install and license a development instance of InterSystems IRIS, see [Quick Start: InterSystems IRIS Installation](#).

2.1 Creating an Interoperability-Enabled Namespace

In order to create a production, you must have an interoperability-enabled namespace. If you have already created an interoperability-enabled namespace, you can use that for this production. To create a new interoperability-enabled namespace:

1. Select **System Administration > Configuration > System Configuration > Namespaces** to go to the **Namespaces** page.
2. On the **Namespaces** page, select **Create New Namespace**. This displays the **New Namespace** page:

Save Cancel

Use the form below to create a new namespace:

3. On the **New Namespace** page, enter the name for the new namespace, such as `INTEROP`.
4. Next to the **Select an existing database for Globals** drop-down menu, select **Create New Database**. This displays the **Database Wizard**.
5. On the first page of the **Database Wizard**, in the **Enter the name of your database** field, enter the name of the database you are creating, such as `interop`. Enter a directory for the database, such as `C:\InterSystems\IRIS\mgr\interop`. On that page, select **Next**.
6. On the next page, select **Finish**.
7. Back on the **New Namespace** page, in the **Select an existing database for Routines** drop-down menu, select the database you just created.
8. Ensure that the check box to make this an interoperability-enabled namespace for productions is selected.
9. Select **Save** near the top of the page and then select **Close** at the end of the resulting log.

You have now created an interoperability-enabled namespace.

For more details about creating a namespace and its associated database, see “[Create/Modify a Namespace](#)” in the “Configuring InterSystems IRIS” chapter of the *InterSystems IRIS System Administration Guide*. For background information, see “[Namespaces and Databases](#)” in the *Orientation Guide for Server-Side Programming*.

2.2 Creating a Simple Production with Business Services and Operations

In this step, you will:

- Create a new production.
- Add one business service and two business operations to the production.
- Configure the business service and business operations.

You will need four directories on your system to run this production. Create them in the operating system before creating the production. For example on a Windows system, you could create the following directories:

```
c:\Practice\In
c:\Practice\Out
c:\Practice\PDFsOut
c:\Practice\Work
```

In the Management Portal, create a new production:

1. Select **Interoperability** and, if prompted, select an interoperability-enabled namespace.
2. Select **Interoperability > List > Productions**.
3. If a production is currently running in the namespace, open it, and then select **Stop**. Return to the production list page.
4. Select **New** to create a new production.
5. Specify a package name, such as TEST, and a production name, such as FileProd. You will be creating a generic production that can be used for any purpose. Select **OK** to create the production.

Add one business service and two business operations to the production:

1. Select the **Services** plus sign to display the Business Service Wizard.
2. In the **Service Class** drop-down menu, select `EnsLib.File.PassthroughService`.
3. Specify the **Service Name** `FileService`.
4. Leave the **Enabled** check box clear.
5. Select **OK**.
6. Repeat these steps for the two business operations. Start by selecting the **Operations** plus sign to display the Business Operation Wizard. Use the `EnsLib.File.PassthroughOperation` class for both operations. Name one operation `WriteFileOp` and the other `WritePDFsOp`.

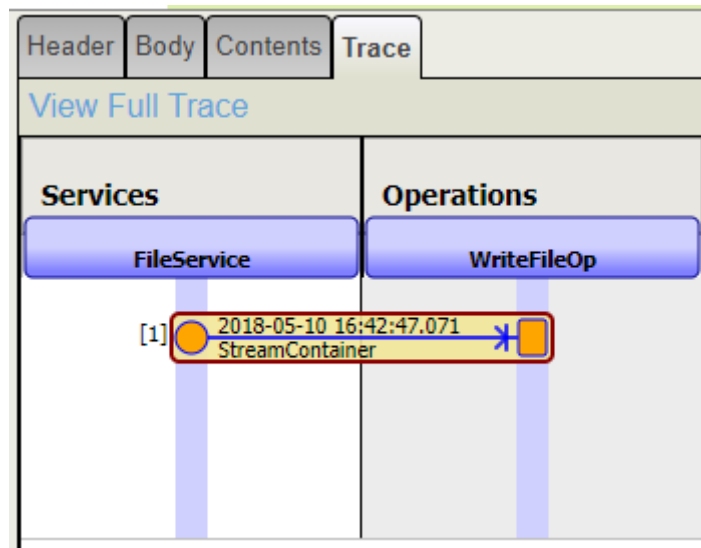
Configure the business service and the two business operations:

1. Select business service that you created in the production configuration diagram, and on the **Settings** tab:
 - a. Select the **Enabled** check box.
 - b. In the **File Path** field, enter `c:\Practice\In`.
 - c. In the **Archive Path** field, enter `c:\Practice\Work`.
 - d. In the **Work Path** field, enter `c:\Practice\Work`.
 - e. In the **Target Config Name** field, select `WriteFileOp`.
 - f. Leave the other fields with the default values.
 - g. Select **Apply**.
2. Specify the settings for each of the two business operations. Select the operation in the production diagram and:
 - a. Select the **Enabled** check box.
 - b. In the **File Path** field, enter `c:\Practice\Out` for the `WriteFileOp` operation and enter `c:\Practice\PDFsOut` for the `WritePDFsOp` operation.
 - c. Leave the other fields with the default values.
 - d. Select **Apply**.

2.3 Starting the Production and Tracing Messages

After starting the production, you will copy a file to the FileService's incoming directory. You will be able to view the file in the WriteFileOp's outgoing directory and trace the message through the production. Note that the WritePDFsOp operation is not used when running the simple production. To start the production and trace the message:

1. Start the production by selecting **Start**.
2. Copy any file into the c:\Practice\In directory. If the production is configured properly, the following should happen:
 - In a few seconds, the file is moved from the c:\Practice\In directory to the c:\Practice\Work directory. A time-stamp is appended to the file specification. For example, if the original file was "hello.txt", the work file could have a name such as "hello.txt_2018-05-07_17.24.57.056".
 - A new copy of the file is written to the c:\Practice\Out directory. It also has a time stamp appended to it.
 - The circles in the production diagram should stay green. If the circles turn red, it means there's an error in the production. Go over the preceding steps and ensure that the directories exist.
3. Select the FileService in the production configuration page and select the **Messages** tab. It lists each message that went through the production. Select **Go To Message Viewer**.
4. Select a message in the Message Viewer and select the **Trace** tab. It will show that the message went from the FileService to the WriteFileOp operation.



5. Select the **Body** tab and it shows the message type and the fields in the message:

The screenshot shows the 'Body' tab of the Message Viewer. At the top, there are tabs for 'Header', 'Body', 'Contents', and 'Trace', with 'Body' selected. Below the tabs is the message type 'Ens.StreamContainer'. Below that is a table with the following fields and values:

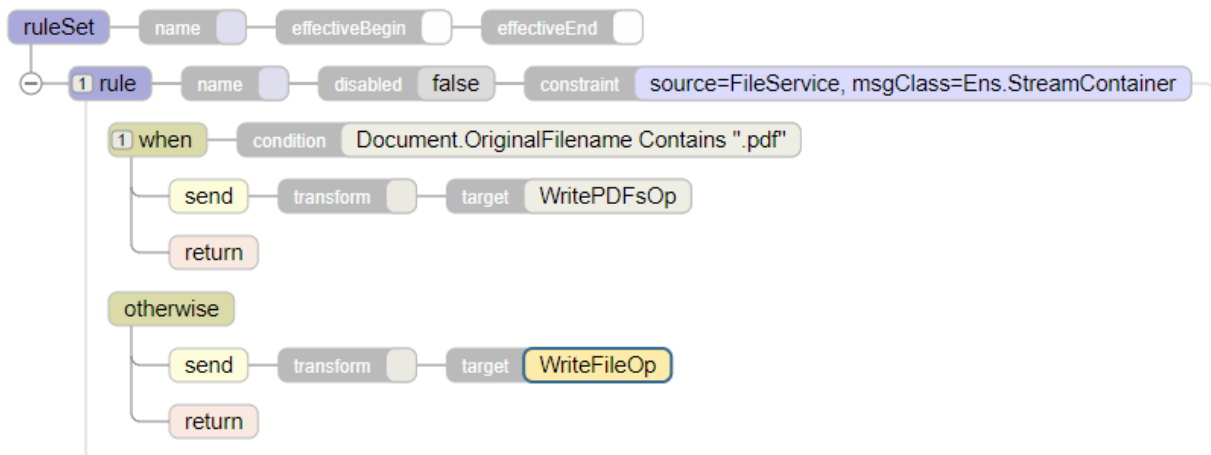
<ObjectId>	6
OriginalFilename	c:\Practice\Work\hello.txt_2018-05-10_16.42.47.050
OutputFolder	
OutputFilename	
Type	FC

Note that the message type is Ens.StreamContainer and that one of its fields is OriginalFilename.

2.4 Adding a Router to the Production

In this step, you will add a routing business process, and a rule to your production. Then you will use copy a file to the incoming directory and view a trace that shows the message going though the router. In the Management Portal::

1. Select **Interoperability > Configure > Production** to get to the Production Configuration page and then select the **Processes** plus sign to display the Business Process Wizard. In the wizard:
 - a. In the **Business Process Class** drop-down menu, select `EnsLib.MsgRouter.RoutingEngine`.
 - b. Select the **Auto-Create Rule** check box.
 - c. Specify the **Business Process Name** `FileRouter`.
 - d. Leave the **Enabled** check box clear.
 - e. Select **OK**.
 - f. Select **OK** to the dialog box to approve the rule class name.
2. Select `FileRouter` in the production configuration page, and on the **Settings** tab:
 - a. Select the **Enabled** check box.
 - b. Select **Apply**.
 - c. Select the magnifying glass to the right of the **Business Rule Name**. This starts the Rule Editor and displays the rule that was automatically generated when you created the business process.
3. In the Rule Editor, you will create a rule that sends PDF files to the `WritePDFsOp` operation and all other files to the `WriteFileOp` operation. Your rule will appear as follows:



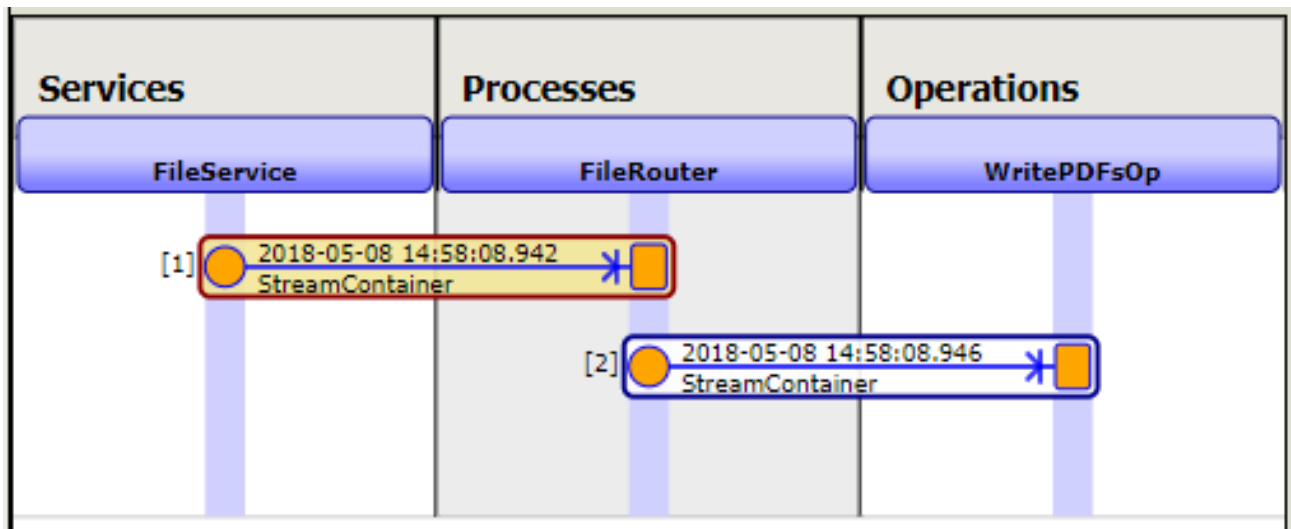
To create this rule:

- a. Double-click the **constraint** value in the rule.
- b. Enter `FileService` in the **Source** field.
- c. Enter `Ens.StreamContainer` in the **Message Class** field.
- d. Select **OK**.
- e. Select the **rule** and then select **when** in the Rule Assistant.

- f. Select the **when** condition value and enter `Document.OriginalFilename Contains ".pdf"` in the text box above the rule diagram and then select **OK**.
 - g. Select the **when** clause in the diagram and then select **send** in the Rule Assistant.
 - h. Double-click the **target** value and select the `WritePDFsOp` configuration item.
 - i. Select the **when** clause in the diagram and then select **otherwise** in the Rule Assistant.
 - j. Select the **otherwise** clause in the diagram and then select **send** in the Rule Assistant.
 - k. Double-click this **send** clause's **target** value and select the `WriteFileOp` configuration item.
 - l. Select **Save**.
4. Return to the Production Configuration page, select `FileService` and on the **Settings** tab: and
 - a. Select the **Target Config Name** `FileRouter` check box.
 - b. Clear the `WriteFileOp` check box.
 - c. Then select **Apply**.

Your production is now complete. The `FileService` will send all messages to the `FileRouter` business process. The `FileRouter` will either send the message to the `WritePDFsOp` or the `WriteFileOp` operations based on the rule.

If you copy `hello.pdf` to the `c:\Practice\In` directory, it will be sent to the `c:\Practice\PDFsOut` directory, but, if you copy `test.txt` to the `c:\Practice\In` directory, it will be sent to the `c:\Practice\Out` directory. You can also view the message traces showing these paths through the file router. For example, `hello.pdf` would have a trace such as:



3 Learn More About Interoperability Productions

For more information about productions, see:

- [Introducing Interoperability Productions](#)
- [Developing Productions](#)
- [Configuring Productions](#)
- [Developing Business Rules](#)

